



ENTERPRISE BUDGETING

Do you have difficulty preparing your budget workbooks for numerous business units? Is it time consuming for you to distribute, track and collect workbooks? Do you want to be able to incorporate data from Microsoft® Excel models into your budget?

Global Software, UK Ltd.'s Enterprise Budgeting application can solve your issues with preparing your budgets.

Enterprise Budgeting allows your organisation to streamline and control your budgeting process, ensuring timeliness, accuracy, and consistency of your budgets. Leveraging the popularity of the Microsoft® Excel spreadsheet as a budget building tool, Enterprise Budgeting requires less time accumulating your budget detail meaning more time for analysis and strategic planning.

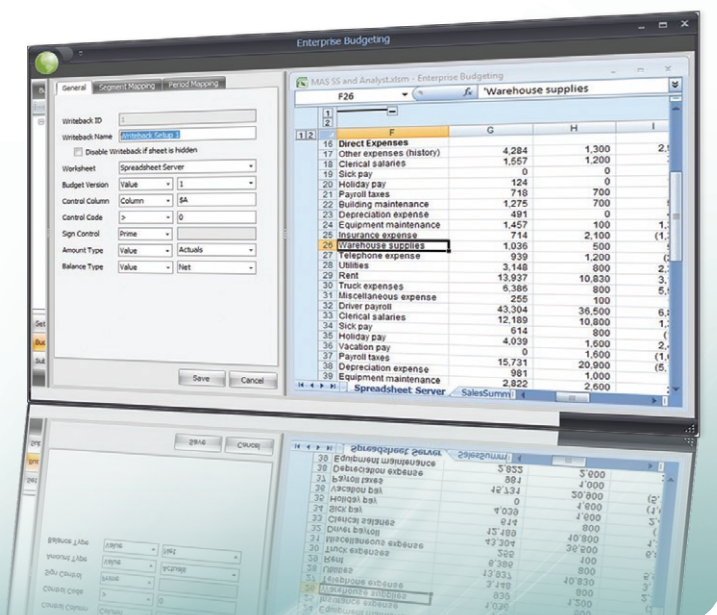
Benefits include:

- Simplified budget setup and administration
- Microsoft® Excel-based budget model
- Centrally defined spread methods and budget rules
- Individual role-based security
- Intuitive distribution process
- Workbook tracking
- Defined budget submission policies
- Simplified budget reporting in Excel
- Compatible with Spreadsheet Server, Executive Dash and Spreadsheet Analyst
- 'Locks' workbook while still giving permission to budget functions
- Enables permitted users write-back capabilities to the Budget database
- Dynamic distribution of workbooks to each budget entity

ESS



GLOBAL SOFTWARE
UK LIMITED®
CERTIFIED PARTNER



ENTERPRISE BUDGETING FEATURES & BENEFITS

Align your Business

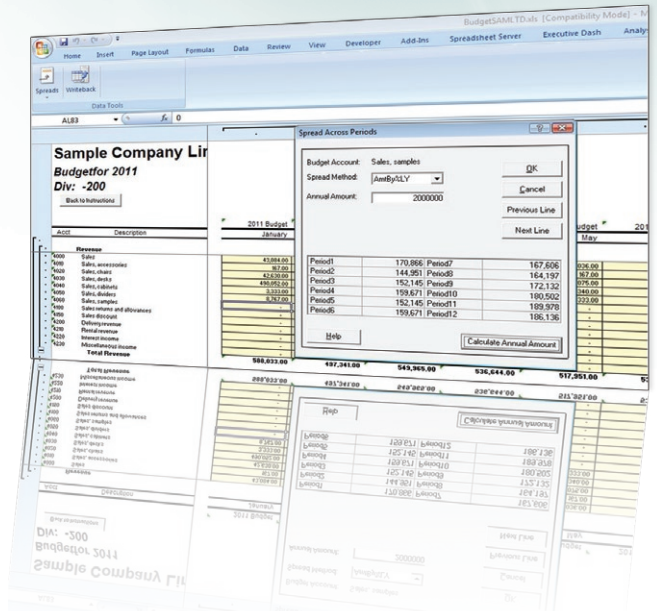
At the center of the Enterprise Budgeting application is a Budgeting Database. This database holds the budget structures, budget data and budget model definitions. The Enterprise Budgeting application is used to define a budget model and map it to a workbook that will serve as a template that will later be replicated and distributed to each budgeting entity.

Budget Template

The Budget Template can have either a Spreadsheet Server or Spreadsheet Analyst report that supplies historical data and/or current year forecast information. When each Budget Workbook is generated, it will be refreshed with only the data relevant to each budget entity. Information about each generated book will be saved in the Budget Database so that the state of each book can be tracked and reported on.

Consolidation of Data

After a workbook has been completed, the budget data will be written back to the Budget database where it is consolidated and available for reporting. After the budgets have been approved and the budget closed, the budget data can then be written back to the source Ledger system.



Streamline your budgeting process

**Want to learn more?
Contact us today.**

Essential Finance
Unit 17
Newlands House
Newlands Science Park
Hull
HU6 7TQ
United Kingdom

Tel: +44 (0) 1482 854 222
Fax: +44 (0) 1482 801 548
Email: solutions@essentialfinance.net
Web: www.essentialfinance.net



A Product By Global Software, UK Ltd.

Trademark Acknowledgements: Microsoft and Excel are registered trademarks of Microsoft Corporation in the United States and/or other countries. Global Software, Inc. is not associated or affiliated in any manner with the respective owners of the foregoing trademarks, trade names or service marks unless expressly stated otherwise. The respective owners of the foregoing trademarks, trade names or service marks have not endorsed, certified or approved any of Global Software, Inc.'s products for use in connection with their respective products.