

ESSENTIAL FINANCE CM CEA MANAGER

Do your Finance Users really understand the CEA set-up?

“Do you want to update your CEA set-up to reflect Business changes but don't know how?”

“Have the CEA 'super-users' left the business?”

“Is your CEA documentation difficult to follow?”

“Do you have errors in your financial postings and don't know how to prevent them?”

CEA Manager will allow the finance user to perform regular checks on the integrity of your CEA configuration and will report all errors and inconsistencies, together with recommended remedial actions.

In addition, it will provide full documentation of the set-up in an easy to understand format, with full explanation of what each Event, Macroable Event, Model, Alias etc, is really doing.

Dentsply find this “simple to use” CEA integrity checking tool invaluable in monitoring “non-standard” changes or additions to our common CEA configuration and implementation approach.

Our shared service centre in Switzerland use it to provide new employees with training in the way CEA has been configured in our numerous European locations. In turn this enables the centralised finance team to be more self-sufficient in terms of education and support. CEA manager also provides an excellent aid in creating documentation that can be available for new system users, auditors or even “old hands” who need a refresher.

As a Finance Applications Consultant life is so much easier with CEA Manager!

Richard Feltham
Finance Consultant
Dentsply Ltd

The screenshot displays the CEA Manager interface with several windows open. A callout box points to the 'Events by Reason Code' window, stating: "Store multiple snapshots of CEA set-up to easily highlight inconsistencies". Another callout points to the 'Event SHIPMENTS' window, which shows a table of sequences and models. A third callout points to the 'Model: SHIPMENTS' window, which shows a table of lines with columns for Line, COMPANY, CST CENTRE, ACCOUNT, AMALYSIS, Debit, Credit, Statistic, Line Description, Document Ref., and Reference. A fourth callout points to the 'Aliases by Macro' window, which shows a table of macros and their descriptions. A fifth callout points to the 'Aliases by Macro' window, stating: "Easily identify segment values and macro definitions to understand the model set-up". A sixth callout points to the 'Aliases by Macro' window, stating: "Drill down from Reason code to model detail & Alias' in one screen".

ESSENTIAL
FINANCE
*Delivering more
from your ERP Systems*

How CEA Manager puts your Finance users back in control

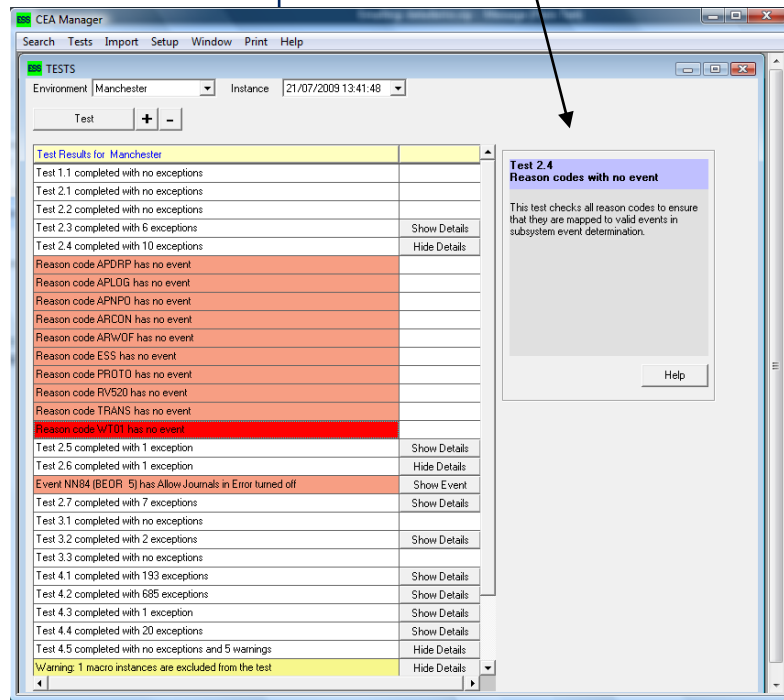
Features

- Ability to store different snapshots of full CEA set-up
- Ease of comparison between different environments
- Drill down from transaction reason code to model detail in single screen
- See all model details in one panel, including reference fields etc..
- Drill through to alias values within model definition to see
 - Segment Description
 - Macro definition & type
- Full enquiry on segment details
- Integrity tests including:
 - Missing Alias values
 - Reason Codes without Events
 - Models with no lines
 - Currency codes with no exchange rates
 - Missing Journal Sources etc...

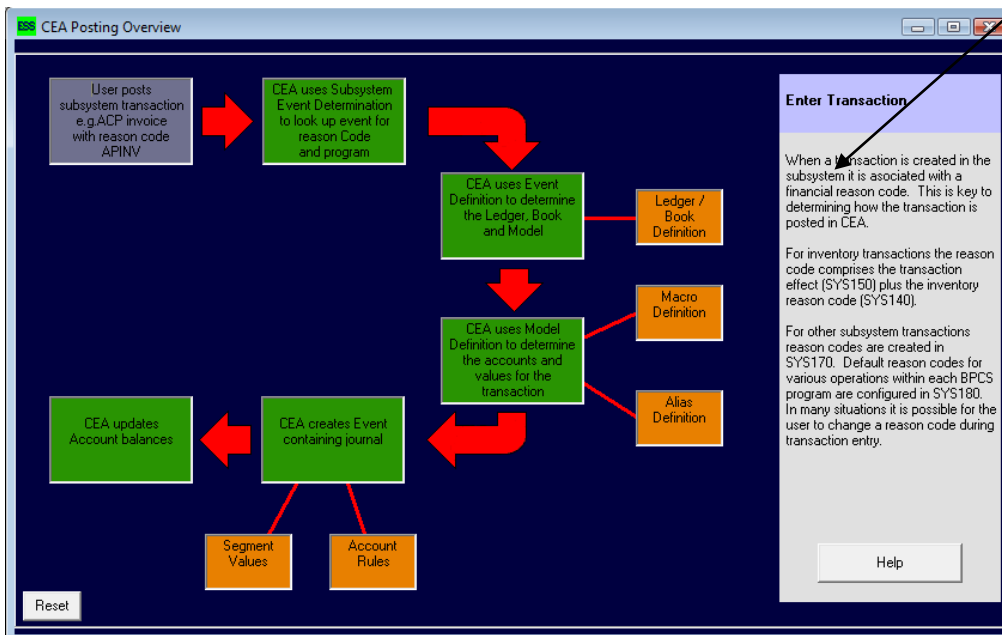
Benefits

- Easy to use training tool for understanding of your CEA set-up
- Highlight inconsistencies in set-up
 - Model line references between environments
- Full visibility of CEA set-up

Tests to check integrity of set-up



Simple training tool for how CEA works



Don't think it's possible?...
Give us 15 minutes to prove it!

Email us at
solutions@essentialfinance.net
to book a free Webex today!

ESSENTIAL FINANCE
Delivering more
from your ERP Systems