



Product Update

Spreadsheet Server V14R2

Apr 2013

**ESSENTIAL
FINANCE**

Delivering more from your ERP Systems

Table of Contents

Spreadsheet Server – V14R2	3
Summary of changes	3
Query Designer V14R2 (<i>New component</i>)	8
Summary of changes	8
Distribution Manager V14R2.....	11
Summary of changes	12

Spreadsheet Server – V14R2

Summary of changes

- Technical pre-requisites for V14R2

Minimum Software	Recommended
Windows XP	Windows 7 (32-bit or 64-bit)
Excel 2003	Excel 2010 (32-bit or 64-bit)
IBM iSeries Access for Windows V5R1	IBM iSeries Access for Windows V5R2 or higher
Microsoft .Net Framework 4.0	
Microsoft Visual Studio 2010 Tools for Office	
Microsoft Access Database Engine 2010	

- Some of the key enhancements since V12R5 (Jan 2012)

- **Single installer**

- **all components**

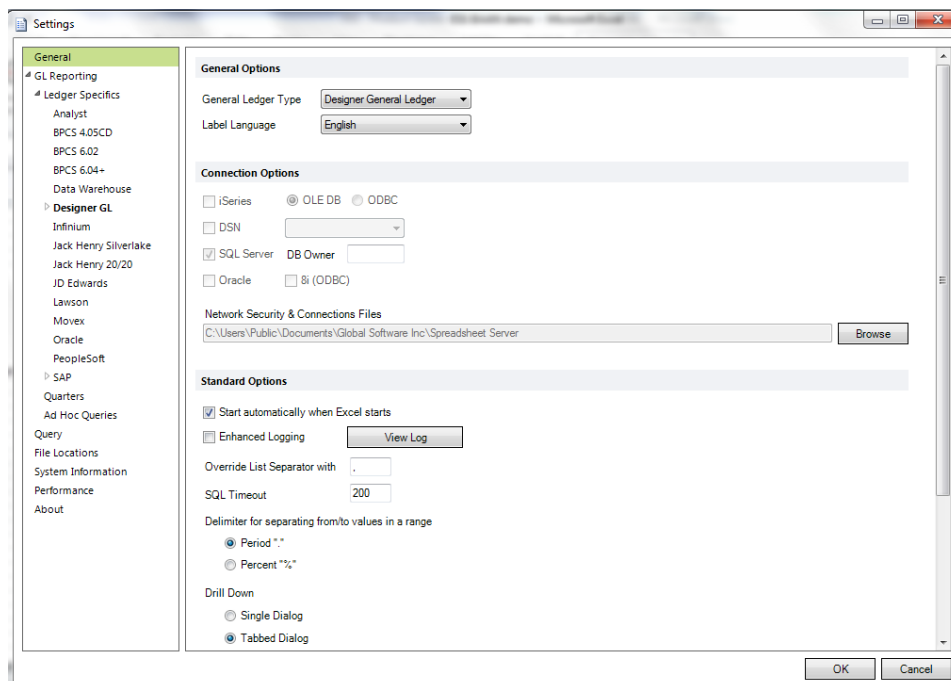
- Spreadsheet Server
 - Query Designer
 - Distribution Manager
 - Profile Scheduler

- **Uninstalls prior versions**

- **Fully compliant with Windows 8, Excel 2010/2013 (32-bit & 64-bit)**

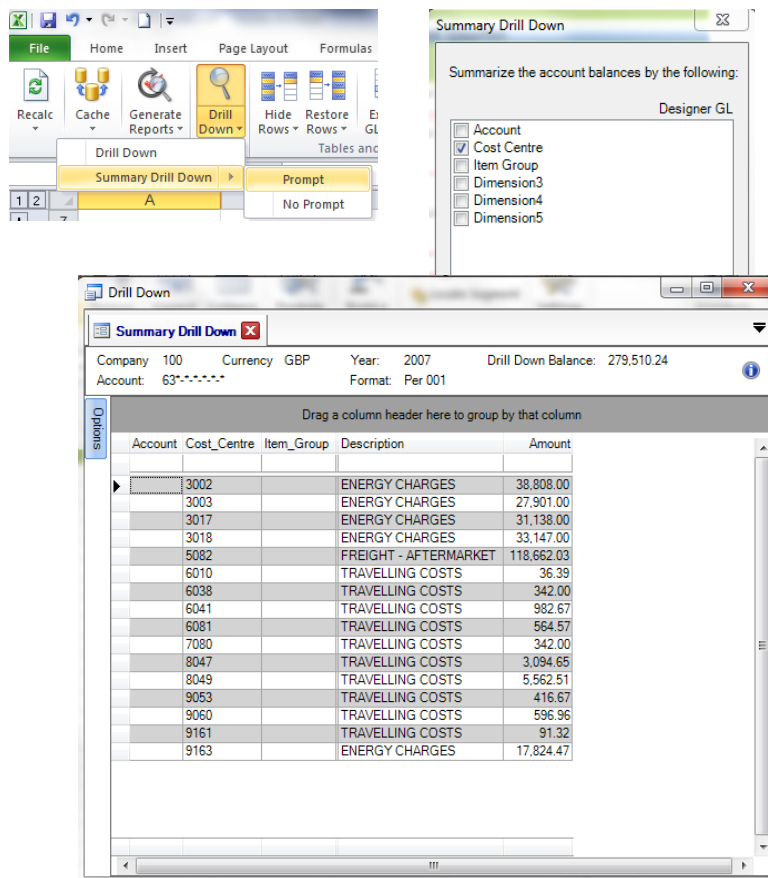
- **Spreadsheet Server Control Panel re-written**

- **User friendly**



➤ Drill-down with summary option

- Allows you to drill to a “grouped” results window from Excel



➤ New options on Ribbon

- Combined Enable and Disable into a single toggle button displaying current status
- Upgrade workbook
 - Automatically replace formulae from previous SS/ED versions
- View log
 - Enable logging on/off
 - Clear Log
 - Refresh Query definitions (from Query Designer)
- Update of all language translations

➤ Application Configurator enhancements

- Connections created and shared for ALL query connections
 - (GL & former E-Dash queries)
- User security at connection level

➤ Re-design of Build a Template and Formula assistant

- Standardise layout for all formulae with prompts for work sheets etc..

Build a Template [Close]

GXE GL Detail

Formulas

- GXL GL Value
- GXE GL Detail**
- GEXQ Query Value
- GEXD Query Detail
- GEXS Query Select
- GEXI Query Inquiry

Starting Column: S

Starting Row: 12

Source Worksheet: GXE-balance

Target Worksheet: new

Source Detail Row: 12

Target Table, Range, or Row: 1

Headings: Y

Autofit: Y

Clear Sheet: Y

Journals Only Column: H

Journals Ad Hoc Query: [Dropdown]

Filter by General Ledger Type: Designer General Ledger

Summarize Balance Level: [Text Box]

Convert Journals to Table: [Dropdown]

Formula Part 1

Formula Part 2 (Optional)

[Insert] [Cancel]

Formula Assistant [Close]

GEXD Formula

Formulas

- GXL Formula
- GXE Formula
- GXC Formula
- GXD Formula
- GEXQ Formula
- GEXD Formula**
- GEXS Formula
- GEXI Formula

Inserts the detail results of the query into the spreadsheet.

Query Name: Open_Orders_Whs_Class.EDQ [Folder Icon] [Globe Icon]

Worksheet: [Dropdown]

Starting Cell/Range/Table: [Text Box]

Fill Down Columns: [Text Box]

Clear a Range of Cells (e.g. A6:D16): [Text Box]

Include Column Headings Auto Fit Column Sizes Clear Sheet/Range/Table

Parameters

Description	Value
Whs	B13 [Dropdown]
Class	B14

=GEXD("Open_Orders_Whs_Class.EDQ", "", "", "N", "N", "N", "N", B13, B14)

[Insert] [Cancel]

➤ Segment List enhancements

- Organise lists by user-defined groups
- Import segment list values from Excel
- insert multiple segment lists at a time
- Improved logic for “and/or” and comparison options to increase flexibility

Segment List Maintenance

Name Description Group

Locked	List Name	Description	Group Name
	3rd Debtors	3rd Party Debtors	
	MyAccts	Sample	
	MyDepts	Sample	
	SampleAccounts	Sample Segment List	Samples
	Stock	FG Stock	

And Or
 Group @ Field Alias Comparison Value

And/Or	Group	Alias/Field Name	Comparison	Value
	1		Not Equal	113007
And	2		Between	113000.113012

➤ Drilldown Panel

- Multi results in single tabbed panel
- Define “sub-queries” to run off any drill-down (*requires Query Designer*)

The screenshots illustrate the drill-down process in a financial reporting tool. The first window shows a summary view of account balances, with the 'Account Balances' tab highlighted. The second window shows a detailed view of monthly transactions, with the 'Monthly Transactions' tab highlighted. The third window shows a further drill-down into specific transactions, also with the 'Monthly Transactions' tab highlighted.

Account Balances Summary Table:

Account	Cost_Centre	Item_Group	Dimension3	Dimension4	Dimension5	Description	Amount
634000	9163					POSTAGE COSTS	3,004.50
635000	9163					TELECOM CHARGES	5,397.00
636000	3002					ENERGY CHARGES	38,808.00
636000	3003					ENERGY CHARGES	27,901.00
636000	3017					ENERGY CHARGES	31,138.00
636000	3018					ENERGY CHARGES	33,147.00
636000	9163					ENERGY CHARGES	9,125.00
637000	5082					TRAVELLING COSTS	622.03
637000	6010					TRAVELLING COSTS	36.39
637000	6038					TRAVELLING COSTS	342.00
637000	6041					TRAVELLING COSTS	982.67
637000	6081					TRAVELLING COSTS	564.57
637000	7080					TRAVELLING COSTS	342.00
637000	8047					TRAVELLING COSTS	3,094.65
637000	8049					TRAVELLING COSTS	5,562.51
637000	9053					TRAVELLING COSTS	416.67
637000	9060					TRAVELLING COSTS	596.96
637000	9161					TRAVELLING COSTS	91.32
637000	9163					TRAVELLING COSTS	297.97
639001	5082					FREIGHT - AFTERMARKET	118,040.00

Monthly Transactions Table (Detailed View):

Account	CostCentre	ItemType	Dimension3	Dimension4	Dimension5	AccountName	Year	Period	Home/Value	Currency	Curr/Value	TransType	Doc	Line	DocDate
637000	8047					TRAVELLING COSTS	2007	1	147	GBP	147	PIN	12062744	1	15012007
637000	8047					TRAVELLING COSTS	2007	1	208	GBP	208	PEX	11004017	1	22012007
637000	8047					TRAVELLING COSTS	2007	1	15	GBP	15	PEX	11004022	1	8012007
637000	8047					TRAVELLING COSTS	2007	1	155	GBP	155	PEX	11004023	1	15012007
637000	8047					TRAVELLING COSTS	2007	1	166	GBP	166	PEX	11004024	1	15012007
637000	8047					TRAVELLING COSTS	2007	1	408	GBP	408	PEX	11004030	1	30012007
637000	8047					TRAVELLING COSTS	2007	1	92	GBP	92	PIN	12062181	1	18122006
637000	8047					TRAVELLING COSTS	2007	1	10	GBP	10	PEX	11003976	1	11122006
637000	8047					TRAVELLING COSTS	2007	1	131	GBP	131	PEX	11003980	1	20112006
637000	8047					TRAVELLING COSTS	2007	1	170	GBP	170	PEX	11003981	1	8012007
637000	8047					TRAVELLING COSTS	2007	1	23	GBP	23	PEX	11003983	1	8012007
637000	8047					TRAVELLING COSTS	2007	1	567	GBP	567	PEX	11003996	1	15012007
637000	8047					TRAVELLING COSTS	2007	1	13	GBP	13	PEX	11003997	1	8012007
637000	8047					TRAVELLING COSTS	2007	1	21	GBP	21	PEX	11003998	1	18122006
637000	8047					TRAVELLING COSTS	2007	1	95	GBP	95	PEX	11003999	1	1012007
637000	8047					TRAVELLING COSTS	2007	1	48	GBP	48	PEX	11004000	1	17012007
637000	8047					TRAVELLING COSTS	2007	1	146	GBP	146	PEX	11004015	1	1022007
637000	8047					TRAVELLING COSTS	2007	1	428	GBP	428	JVR	43000783	57	15022007
637000	8047					TRAVELLING COSTS	2007	1	20	GBP	20	PEX	11003982	1	8012007
637000	8047					TRAVELLING COSTS	2007	1	241	GBP	241	PEX	11004016	1	29012007
637000	8049					TRAVELLING COSTS	2007	1	204	GBP	204	PEX	11004018	1	26012007

Monthly Transactions Table (Further Drill-Down):

Account	CostCentre	ItemType	Dimension3	Dimension4	Dimension5	AccountName	Year	Period	Home/Value	Currency	Curr/Value	TransType	Doc	Line	DocDate
637000	6081					TRAVELLING COSTS	2007	1	463	GBP	463	PIN	12062687	1	11012007
637000	6081					TRAVELLING COSTS	2007	1	22	GBP	22	PCV	12003342	1	2012007
637000	6081					TRAVELLING COSTS	2007	1	79	GBP	79	PCV	12003341	1	2012007

Query Designer V14R2 (New component)

Summary of changes

As an integral part of Global Software, Inc.'s Spreadsheet Server, Query Designer allows users to build queries which are then used in Excel to seamlessly retrieve critical business data and return the data for use within a spreadsheet.

When using queries in Spreadsheet Server, three components work in conjunction with each other:

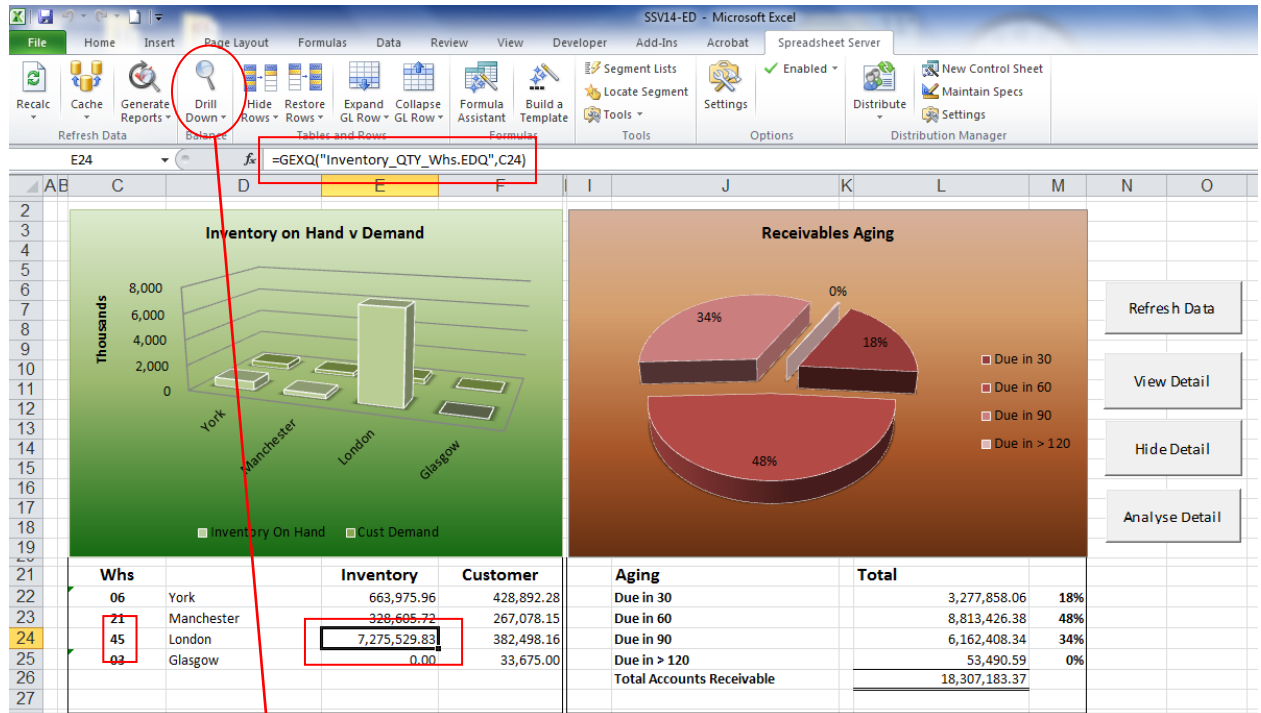
- > Query Designer, a visual tool (formerly known as "Executive Dash" or "E-Dash"), is used to design and maintain queries.
 - > Query Exchange, an online depository of queries, is used to download selected queries to the Query Designer and then utilize them in Excel.
 - > The Excel Add-In component allows the user to execute the Query Designer queries on a spreadsheet, returning dynamic business data
- Access to each component is based upon the licensed features assigned to a user.

You can create your own queries and publish them to the network for users to select and run in excel, with the parameters you specify in the query definition.

- This makes 4 new formulae available for any spreadsheet server user

- **GEXQ Query Value (Sum, Count, Max etc.. of a result field)**

- Summary value refreshed when parameters changed in Excel



- Drill to detail

Item	Description	Whs	Location	Opening Balance	MTD Receipts	MTD Issues	MTD Adjustments	OnHand It
1247A00	TRIPLEX - ANDOVER BULK	45	GOOD	169.915	0	826.242	724.216	67.889
127400	SUPER STRONG WHITE BULK	45	BULK	28.974	52.76	78.174	2.182	5.742
134832	TRIAL FLOUR 32KG	45	GOOD	32	0	0	0	32
138100	DAMAGED FLOUR BULK	45	BULK	31.014	0	17.18	0	13.834
178410	ELEPHANT ATTA MEDIUM H 10KG	45	GOOD	0	0	0	-1960	-1960
ASDAL	LABOUR CHARGE FOR YEAST PACKNG	45	GOOD	6626	0	0	0	6626
EXPL	LABOUR CONVERSION EXPORT	45	GOOD	-4018	0	0	0	-4018
HOYD	LABOUR CONVERSION HOYD	45	GOOD	2879	0	0	0	2879
HOYLE	LABOUR CHARGE HOYLE	45	GOOD	4961.251	0	0	0	4961.251
JSSACH	LABOUR CONVERSION JSSACH	45	GOOD	50.4	0	0	0	50.4
M113021	FLOUR 8X1.5KG MCD SR	45	GOOD	779	16744	0	-20382	-2859
M113048	FLOUR 8X1.5KG MCD PLAIN	45	GOOD	4506	14513	0	-17745	1274
M113072	FLOUR 12X500G MCD SR	45	GOOD	3420	826	0	-4497	-251
M113080	FLOUR 12X500G MCD PLAIN	45	GOOD	900	7380	0	-8820	-540
M113447	FLOUR 8X1.5KG BERO PLAIN	45	GOOD	273	7007	0	-7371	-91
M160801	FLOUR 8X1.5KG HOVIS S/WHITE	45	GOOD	45	0	0	0	45
M161034	YEAST 10 X 42G HOVIS	45	GOOD	128	3541	0	-2520	1149
M161646	FLOUR 8X2KG MCD PLAIN PROM	45	GOOD	0	0	0	-2160	-2160
M161670	FLOUR 8X2KG BERO PLAIN PROM	45	GOOD	0	466	0	-1200	-734
M162537	FLOUR 4X3KG HOVIS SUPER STRONG	45	GOOD	69	6450	0	-6643	-124
M163924	FLOUR 8X1.5KG MCD PL PMP 85P	45	GOOD	-6	1826	0	-182	1638
M200.0018	YEAST IMPROVER 4	45	GOOD	1610.162	1016.4	140.066	0	2486.496
M200.0760	RAISING AGENT IBEX	45	GOOD	13242.622	10000	6803.131	0	16439.491
M200.3000	RAISING AGENT SODA FFQ	45	GOOD	18277.741	10000	5692.416	0	22585.325

➤ **GEXD Query Detail** generates rows of data from the query direct into Excel sheet

Top 10 Customer - YTD Sales					
Customer	Customer Name	MTD Sales	YTD Sales	% of Total	
67479	Willett & Son (Bristol) Ltd	25,601	1,023,474	19.9%	
82262	Safeway RDC	29,902	942,744	18.3%	
70712	Holgran Limited	0	634,248	12.3%	
82543	J Sainsbury Plc	0	422,507	8.2%	
82646	J Sainsbury Plc	35,096	387,959	7.5%	
82594	Soreen Limited	15,973	342,266	6.6%	
72329	J.Sainsbury Plc R.D.C.	2,069	287,387	5.6%	
81887	ABN Ltd (Farming Solutions)	0	184,780	3.6%	
71011	Kerry Foods Ltd (Burton Site)	0	161,963	3.1%	
82600	Harvestime Limited	0	146,219	2.8%	
Top 10 Total		108,641	4,533,546	88.0%	
All Customers			5,151,746		

Clear Grid

Run Top 10 Sales

➤ **GEXI Query Inquiry** to drill down further based on the results of another query

- 1st query shows Top 10 customers by Total Order Value

Top Ten Customers - Open Orders				
Customer Number	Customer Name	# of Open Order line	Open Order Amount	Drill to Orders
67014	Warburtons Limited	3	123,480	???
82866	The Pastry Manuf. Co Ltd	36	=GEXI("Open_orders.EDQ",827)	???
100113	Grand Moulins de Paris	2	69,993	???
82417	Safeway RDC	35	68,877	???
15204	Frank Roberts & Sons Limited	119	35,847	???
81396	Le Pain Unit 97 Line 6	29	34,272	???
82471	Newly Weds	4	32,166	???
64204	British Bakeries Limited	30	25,815	???
81451	Nestle Purina PetCare (UK) Ltd	12	23,444	???
81249	Golden West Foods Limited	72	21,504	???

Run Top 10 Orders

- Query Inquiry allows you to drill using the customer number into another report, such as ageing or open orders.

- **GEXS Query Select** allows prompts for fields when running a query
 - e.g. item class

Inventory Balances & Valuation

Warehouse	Description	Inventory Qty	Inventory Value	Open Orders
06	York	127,973	\$374,071	\$391,978
21	Manchester	72,718	\$179,277	\$267,078
45	London	9,341	\$12,260	\$0
Total		210,032	\$565,607	\$659,056

Item Class Selection List:

- ICLAS ICDES
- 17 OTHER WHT
- A OTHER CO PRODUCTS
- B BAGGED FLOUR
- B1 BREAD BAGS-HOVIS GRANARY
- B2 BREAD BAGS-SLIMCEA
- C 3rd COUNTRY WHEAT**
- C1 COMPENSATION =PRODUCTION
- C2 COMPENSATION-DISTRIBUTION
- C3 COMPENSATION-OWN FLEET

Parameter Type: SmartParm Regular

Distribution Manager V14R2

Summary of changes

New Profile Scheduler

The Profile Scheduler component in Spreadsheet Server allows for scheduling various tasks such as caching the Distribution Manager address book, refreshing workbooks, distributing Distribution Manager workbooks, and loading local database files.

The tasks can be scheduled to open Excel & run distribution lists without having Excel/Outlook running (i.e. from a server)

